

Appendix 1

IFMBE AC motion to change the IFMBE Organisation Structure

Motion was proposed by Herbert Voigt following a Special Strategic Meeting held in Brussels on 14 March 2012 on the Reconstitution of the IFMBE AC. This motion was put forward to the IFMBE AC members for a vote. The IFMBE AC members supported the motion and table it to the General Assembly for voting.

The proposed change to the IFMBE structure has been written up in the IFMBE News by President Voigt. The following is the entire article that explained the proposed change.

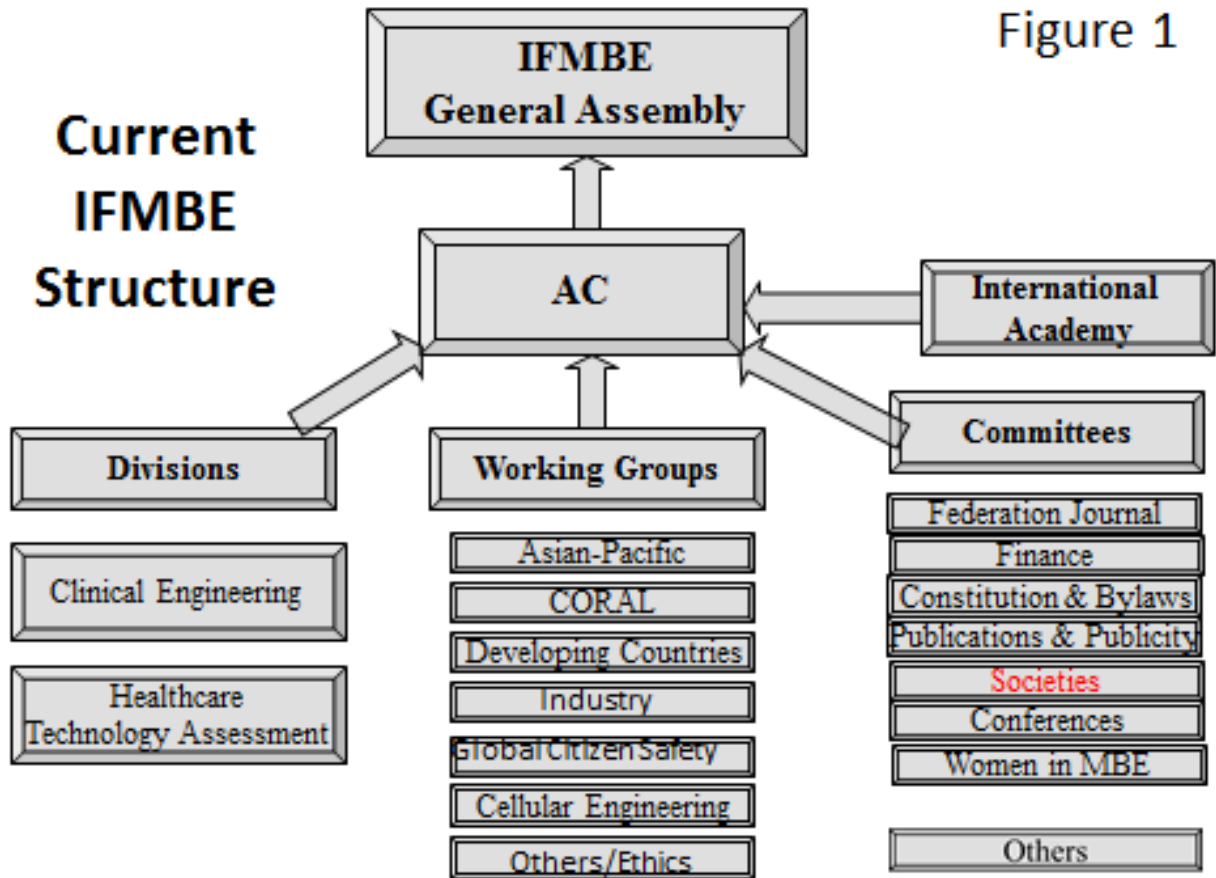
The IFMBE President's Remarks on a new Proposed IFMBE Structure by Herbert F. Voigt, Ph.D. (15 April 2012)

Greetings:

I wish to let you know that the IFMBE Strategic Planning Committee is recommending some changes to the structure of the federation. If approved by the IFMBE AC and recommended to the IFMBE GA by April 27th, these changes could be voted on at the May 28th General Assembly in Beijing, China and take effect immediately.

These proposed changes began with discussions within several meetings of the so-called IFMBE Secretaries Committee starting a few years ago. There were concerns regarding the name of the committee, its relative role within the Federation and the apparent lack of ownership of the Committee's important activities by the Presidents of the IFMBE's constituent Societies. A first attempt to remedy some of these concerns was to rename the Secretaries Committee to the **Societies Committee**. A call was then issued that the Society Presidents participate directly; this was only partially successful. Additional discussions by the IFMBE Officers and the Chairs of several IFMBE Committees culminated in a Special Strategic Planning Committee meeting in March 2012 in Brussels, Belgium. At that meeting a plan was made to make a few structural changes to the IFMBE. These are discussed here. The current structure of the IFMBE is seen in Figure 1.

Figure 1



As you see, the IFMBE is embodied in its General Assembly (GA). The Administrative Committee (AC) acts when the GA is not in session. The IFMBE is organized into Divisions, Working Groups and Committees. In addition we have an International Academy. These are all described on our webpage and within our Constitution. The Societies Committee (in red) takes the place of the former Secretaries Committee. It is widely believed, however, that the Societies Committee should not be considered on the same level as the other IFMBE Committees because of its essential role in effecting the IFMBE's overall mission. Therefore the recommendation is to dissolve the Societies Committee and create a Council of Societies, which would not be an IFMBE Committee at all, but a new structural entity (see Figure 2).

**Proposed
IFMBE
Structure**

Figure 2

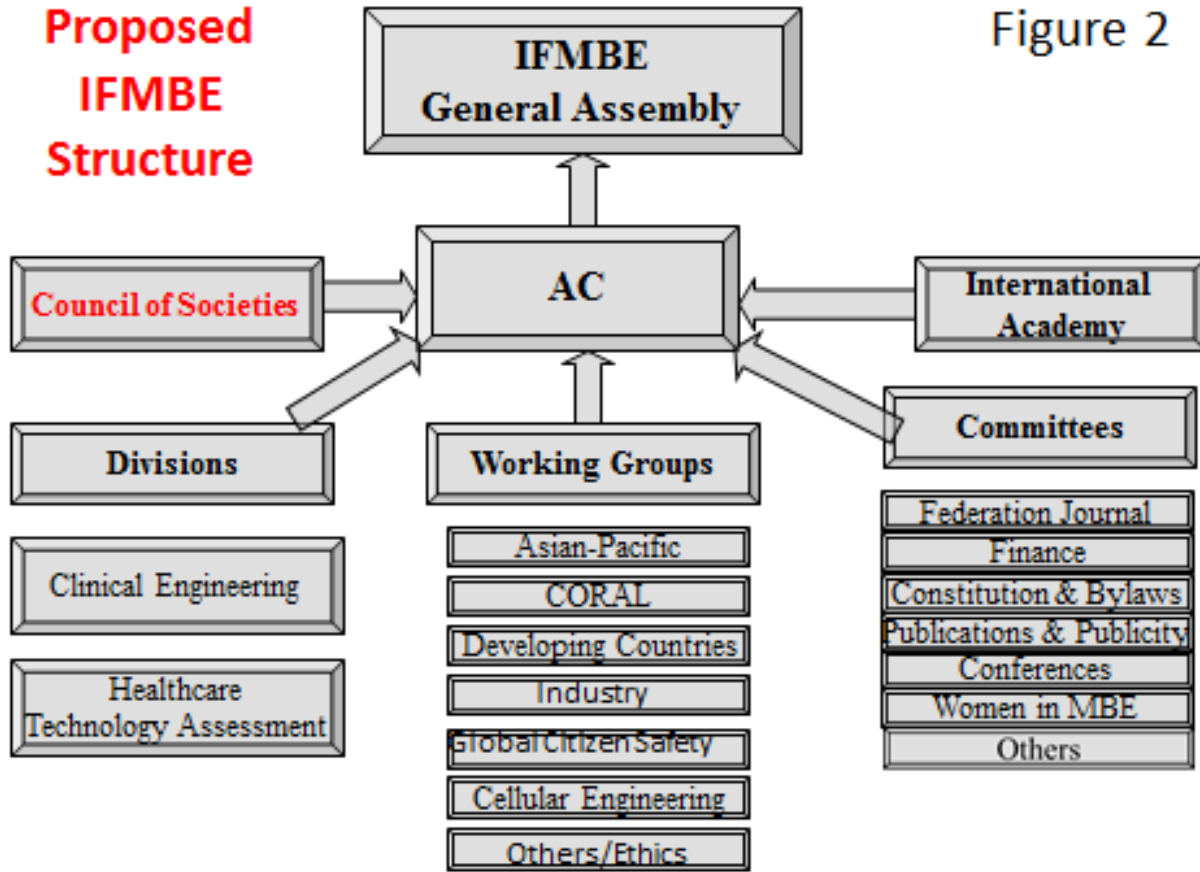


Figure 2 shows the new proposed IFMBE structure. In addition to the International Academy, Divisions, Working Groups and Committees, there is a new **Council of Societies**. Figure 3 shows the constituents of the Council of Societies and the proposed reconstituted Administrative Council (AC).

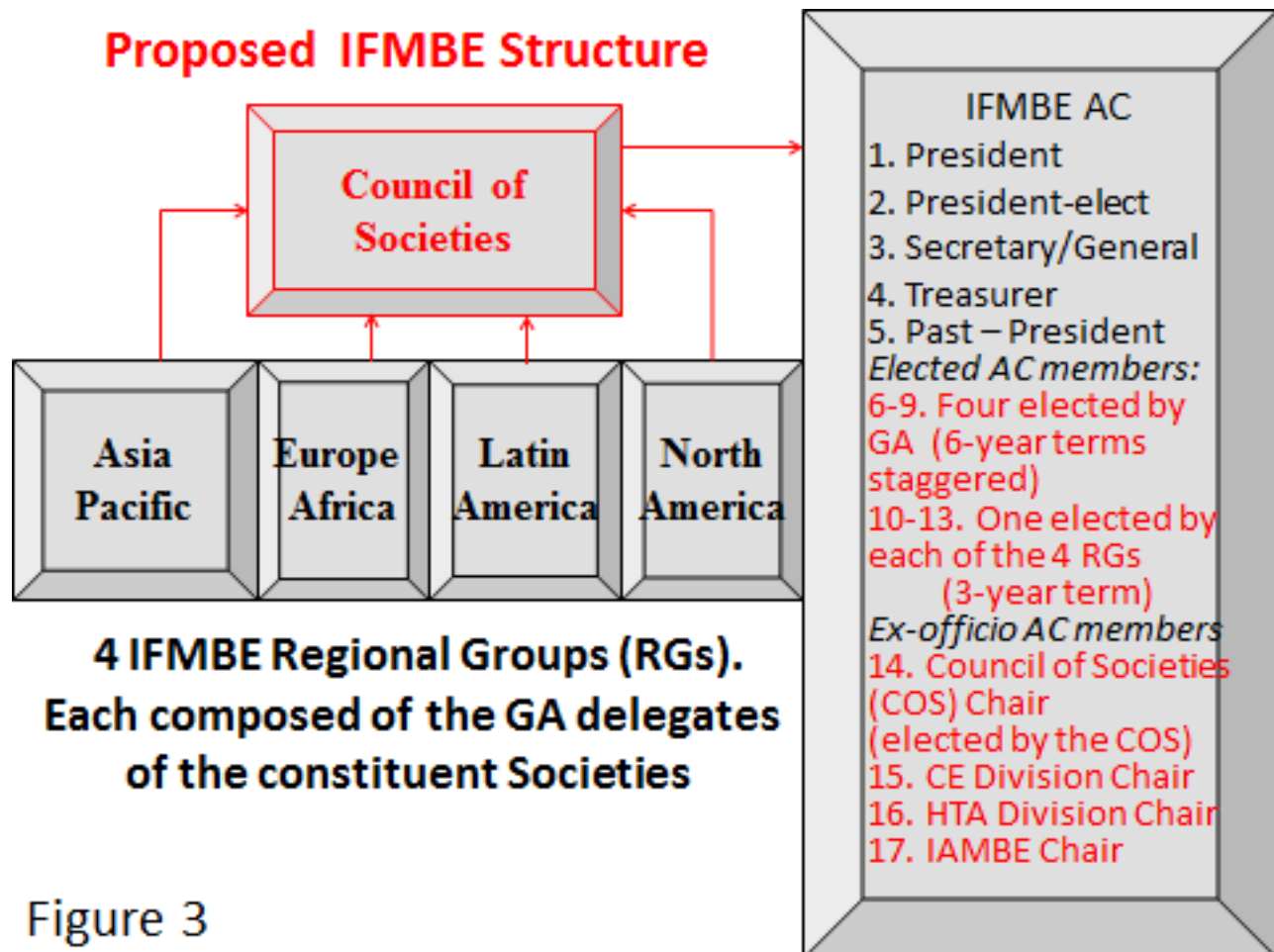


Figure 3

Specifically, the proposal is to:

- remove Article 12(c) of the IFMBE Constitution, and
- establish a **Council of Societies** consisting of Four Regional Groups (RGs):
 1. North America,
 2. Asian Pacific,
 3. Europe/Africa, and
 4. Latin America.
- Also we will enable the creation of additional Regional Groups by decision of the Council of Societies under defined requirements for a critical mass and with required minimum activities.

Each RG will be composed of the GA delegates of the constituent Societies within the defined region. For the Transnational Societies, each of their delegates will vote with the RG delegates

of their geographical region, (e.g., an IEEE/EMBS delegate from China will vote with the Asian Pacific RG delegates, while an IEEE/EMBS delegate from Canada will vote with the North American RG delegates).

The Reconstitution of the IFMBE AC:

All IFMBE Officers will remain on the AC as before; these will be elected (or will ascend to office) at the General Assembly as before.

Four AC members (instead of 8) will be elected for overlapping 6-year terms at the General Assembly.

RG Chairs will be elected by the regional IFMBE GA delegates before the General Assembly and become *ex officio* AC members with vote for a 3-year term for a maximum of two terms at the following General Assembly.

The Council of Societies' Chair is elected by the GA delegates at a Council of Societies Meeting or at the GA for a 3-year term for a maximum of two terms; this Chair is an *ex officio* AC member with vote.

Divisions – CE/HTA Division Chairs are *ex officio* AC members with vote.

IAMBE – The Chair of the Academy is an *ex officio* AC member with vote.

IFMBE Regional Working Groups:

The primary purpose of IFMBE Regional Working Groups will be to organize activities for their regions, including conferences, research networking, maintenance of list of academic programs, etc.

Existing IFMBE Regional Working Groups are:

the CORAL Working Group, and

the Asian Pacific Rim Working Group.

Proposed is the formation of a Regional European Working Group, including activities in organization of MEDICON, Nordic-Baltic and European Conferences.

This set of proposals is now under consideration of the IFMBE AC. Please contact AC members or IFMBE Officers with concerns/suggestions. It is our intention to make the IFMBE a more effective and representative organization so that it can effectively carry out its Mission efficiently.